

MONTHLY MEMBERSHIP PROGRESS REPORT

District 11 A1

Results as of: 5/31/2020

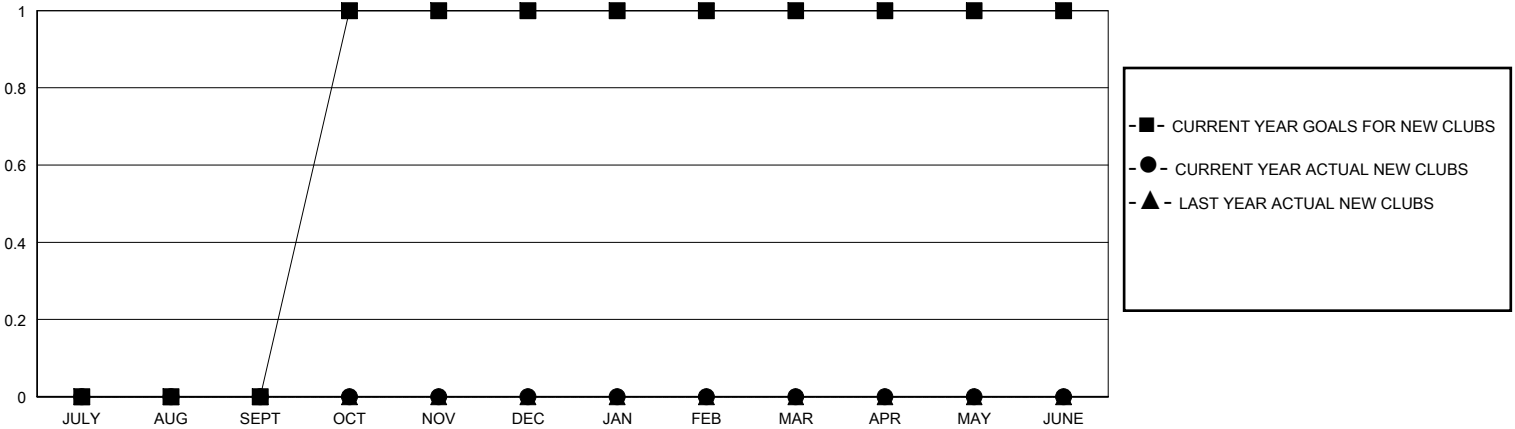
GMT:

LOCATION MICHIGAN

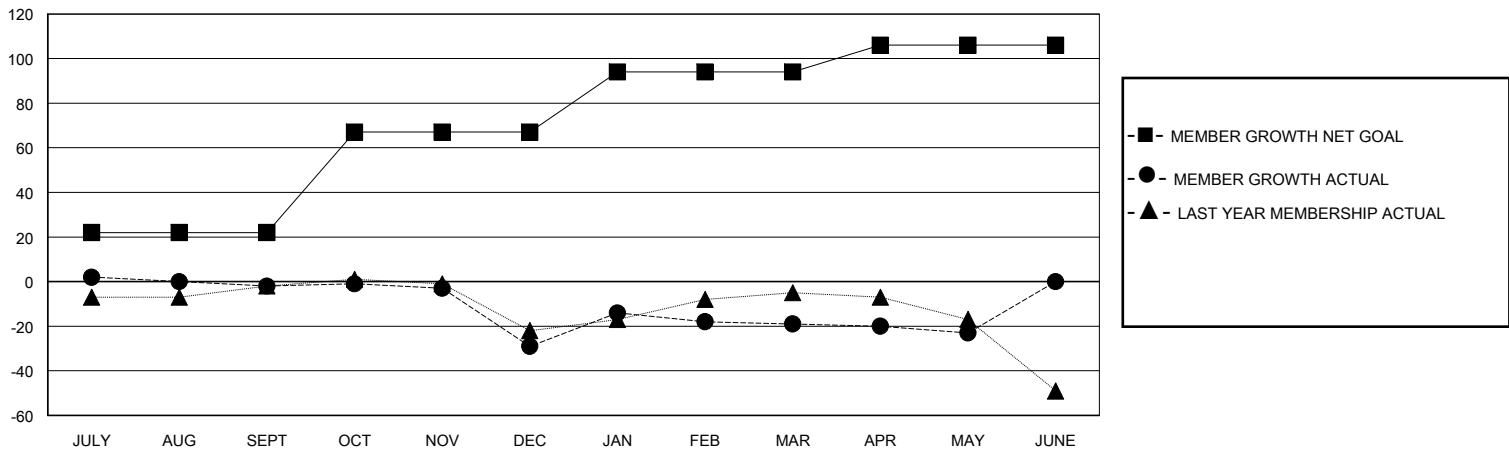
GMT CA

Clubs				Members			
RESULTS FOR 2019-2020				RESULTS FOR 2019-2020			
QUARTER	NEW CLUB GOAL	NEW CLUBS	DROPPED CLUBS	QUARTER	MEMBER GROWTH NET GOAL	MEMBER GROWTH ACTUAL	DROPPED MEMBERS ACTUAL (including transfers)
JULY/AUG/SEPT	0	0	0	JULY/AUG/SEPT	22	21	14
OCT/NOV/DEC	1	0	1	OCT/NOV/DEC	45	15	40
JAN/FEB/MAR	0	0	0	JAN/FEB/MAR	27	39	14
APR/MAY/JUNE	0	0	0	APR/MAY/JUNE	12	2	6

GOALS AND ACTUAL NEW CLUBS CUMULATIVE



GOALS AND ACTUAL MEMBERS CUMULATIVE



DROPPED CLUBS: 1

20 CLUBS OF 35 ADDED 1 OR MORE NEW MEMBERS

GENDER DISTRIBUTION

MALE 485 (63.32%)
FEMALE 281 (36.68%)

DROPPED MEMBERS

DECEASED	10
CLUB CANCELLED	22
OTHER	41
TOTAL	73

[CLICK HERE FOR CUMULATIVE MEMBERSHIP DATA](#)

TOTAL FAMILY UNIT MEMBERS	161
FAMILY MEMBERS PAYING HALF DUES	85